

CYCLOPE HYPERVISOR

REMOTE SUPERVISION

OF MULTIPLE SECURITY SENSORS



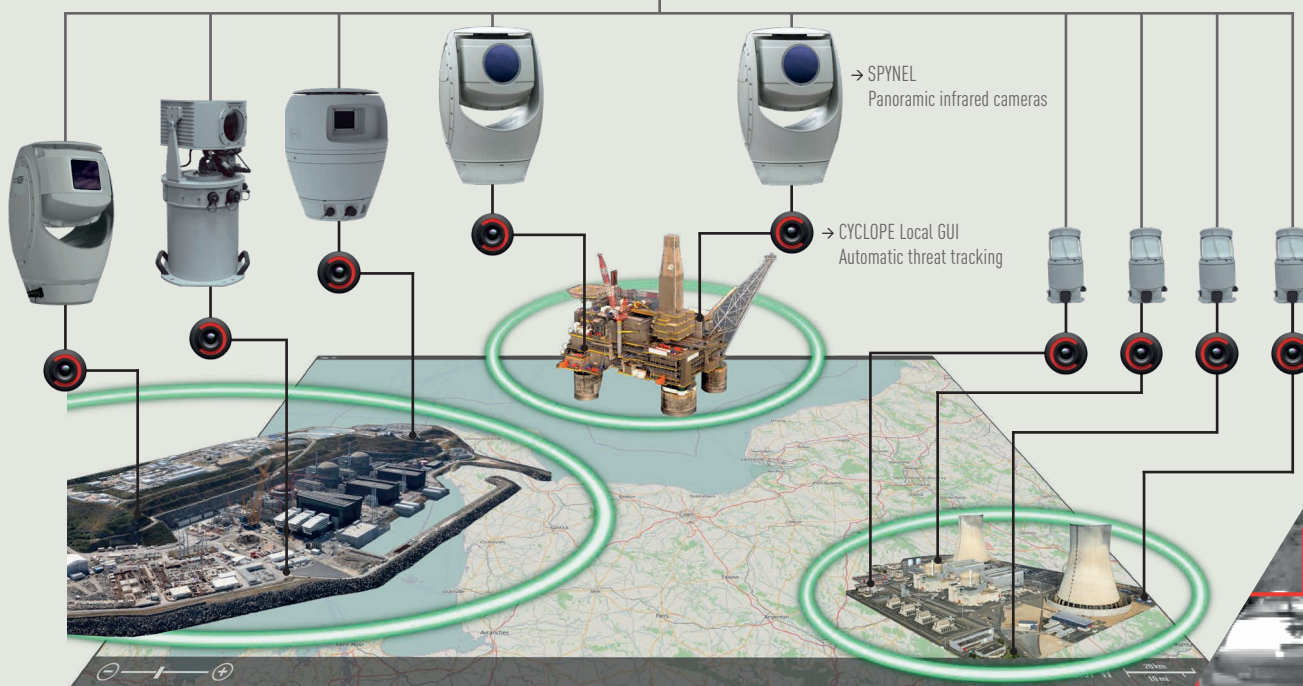
➤ REAL-TIME CENTRALIZATION OF ALL INTRUSIONS OVER MULTIPLE CRITICAL AREAS

CYCLOPE Hypervisor is an enhanced upper layer to CYCLOPE, the automatic intrusion detection software provided with SPYNEL 360-degree IR security cameras. CYCLOPE Hypervisor centralizes all data from security sensors over a common network to offer a global geolocation of all tracked events.

CYCLOPE Hypervisor provides a remote situational awareness of large critical infrastructures with complex security architecture, including multiple SPYNEL sensors located on one or several sites. All detected threats are listed and geolocated on maps displayed on a single screen, allowing for a more efficient user experience for wide area security, with lower staff required. Merging the relevant information from various devices (SPYNEL cameras, AIS, ARPA radar...), CYCLOPE Hypervisor affords early warning of security breaches for faster reaction.



→ CYCLOPE Hypervisor
Remote geolocation of all events on a global map



→ Global monitoring, from one single workstation, of all threats tracked by multiple sensors, over multiple critical sites

CYCLOPE HYPERVISOR

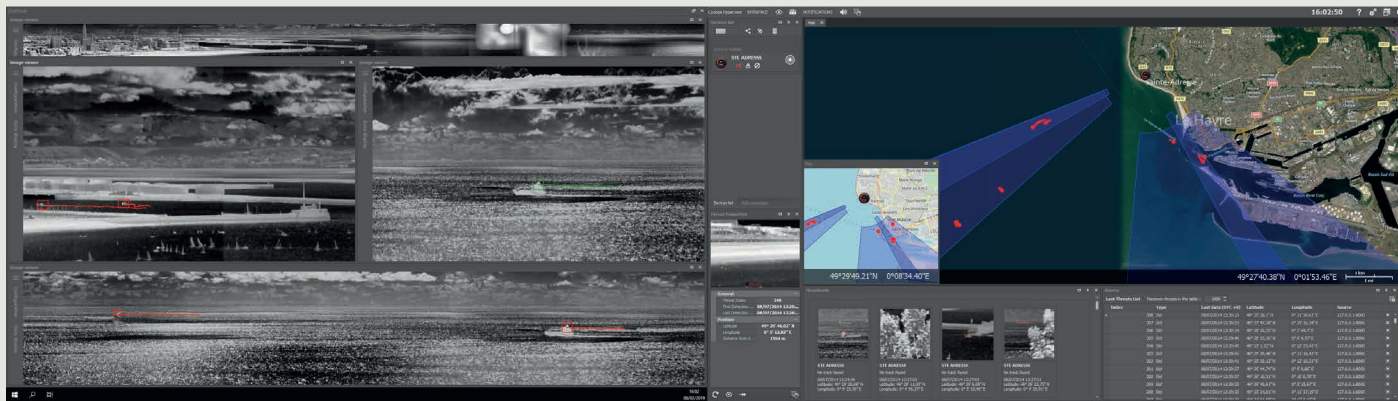
REMOTE SUPERVISION OF MULTIPLE SECURITY SENSORS



FEATURES

CYCLOPE Hypervisor automatically detects and connects to all CYCLOPE workstations and pulls up all relevant data:

- Geolocation of all threats and sensors on vector smart maps, or custom local maps.
- Centralized display of videos transmitted by multiple SPYNEL sensors (panoramic, zooms, thumbnails).
- Each map can be automatically centred on a selected SPYNEL sensor.
- Display of a table listing the last detected events, with their ID, location and timestamp.
- The threat properties panel displays the targets infrared thumbnails, location and time information.
- Easy creation of customizable bookmarks.
- Display and filtering of tracks from different modules (AIS, ARPA Radar ...).
- The main zoom window on a local CYCLOPE workstation can be slaved and auto-centered by a click on a track on HYPERVISOR GUI.
- Moving objects or sensor platforms can be localized on map, using NMEA-over-IP protocol
- The notification panel allows the user to configure sound alarms upon detection criteria.



→ Geolocation of all threats and sensors on map - Thermal video display (panoramic, zooms, thumbnails of intruders)

APPLICATIONS

CYCLOPE Hypervisor provides enhanced security supervision to extensive infrastructures and complex sites with multiple buildings. Applications include:

- Centralized surveillance of long borders and coasts.
- Protection of wide no-trespassing zones around sensitive assets with dense architecture: large military bases, nuclear and power plants, extraction sites of critical raw materials, ammunition dumps, warehouse areas, prisons...
- Full 360-degree surveillance without dead zones: situational awareness of vessels, offshore platforms, FPSO (Floating Production Storage and Offloading units), FLNG (Floating Liquefied Natural Gas ships).
- Ultra-wide area security: pipelines, railways, large solar and wind farms.
- Security supervision across multiple sites .